



Chambers & Incubators

- Walk-in Stability Chamber
- Stability Chamber
- Walk-in Cooling Chamber
- Cooling Chamber
- Walk-in BOD Incubator
- BOD Incubator



eie INSTRUMENTS PVT. LTD.

(An ISO 9001:2015 Certified Company)

Walk-in Stability Chamber (EIE-106WGT)



25°C / 60% RH | 30°C / 65% RH

30°C / 70% RH | 30°C / 75% RH

40°C / 75% RH | 25°C / 40% RH

30°C / 35% RH | 40°C / NMT 25% RH

Construction Details:

- Designed as per ICH guidelines to meet, WHO and USFDA requirement.
- Chamber equipped with PLC & Touch screen HMI system.
- Prefabricated modular structure with PUF/Rockwool insulated panels & reinforced floor panel.
- Interior Stainless Steel & Exterior PPGI/Stainless Steel.
- Toughened glass window to inspect samples.
- Racks & trays made of Stainless Steel with adjustable tray heights.
- CFC free refrigeration systems.
- Chamber illumination by LED light with door switch.



Ethernet
Communication



Alarm



IQ/OQ/PQ
Documents



PC
Connectivity



Eco
Friendly



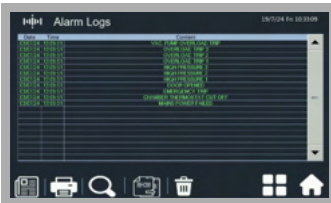
CFC Free

Walk-in Stability Chamber (EIE-106WGT)



PLC & HMI Features

- 7" touch screen HMI Display & PLC Controller System.
- Storage facility up to 21600 readings logged at 1 minute interval.
- Magnetic door lock for Password protected door access.
- Audit trail generation in HMI Display.
- Auto resume after power failure (**Main as well as UPS**).
- Three level operation, Admin, Supervisor & General with fixed access rights.
- Standby refrigeration and Standby humidity system.
- GSM MODULE (Mobile alert configuration) system.
- In-Built Data logger (Uniformity module).
- 4 Temp + 4 RH Sensor for data logging purpose.
- Compatible with EIE'S own StabSoft PC Software.
- Auto switch over facility and calender programing for mains and standby system.



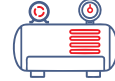
Safety Provisions



Over temperature
cutoff system



Electrical overload
cutoff system



Time delay for
compressor switch on

Selection Guide

Working Chambers W X D X H (Meter)	Number of Trays	Capacity (Liters)	Product Code
2.00 X 1.00 X 2.00	8	4000	EIE-106WGT40
2.00 X 1.50 X 2.00	12	6000	EIE-106WGT60
2.00 X 2.00 X 2.00	24	8000	EIE-106WGT80
2.00 X 2.50 X 2.50	28	12500	EIE-106WGT125
2.50 X 3.00 X 2.50	36	18750	EIE-106WGT187
3.10 X 3.00 X 2.50	40	23250	EIE-106WGT232
3.70 X 3.50 X 2.50	66	32500	EIE-106WGT325
3.90 X 3.90 X 3.00	84	45000	EIE-106WGT450
3.85 X 5.20 X 2.50	100	50000	EIE-106WGT500
6.40 X 5.00 X 2.50	200	80000	EIE-106WGT800

W = Walk-in G = GMP T = Touch Screen

Also available in powder coated model



Safety



PLC Control



Touch
Screen



Email Alert



Stand by
Cooling



Stand by
Humidity

Stability Chamber (EIE-106RGT)



25°C / 60% RH | 30°C / 65% RH

30°C / 70% RH | 30°C / 75% RH

40°C / 75% RH | 25°C / 40% RH

30°C / 35% RH | 40°C / NMT 25% RH

Construction Details:

- Designed as per ICH guidelines to meet, WHO and USFDA requirement.
- Chamber equipped with PLC & Touch screen HMI system.
- Internal chamber fabricated from stainless steel S.S.-304/316 grade.
- Exterior body is fabricated from S.S.-304/316 grade material.
- Full view poly-carbonate observation door to inspect test samples.
- Racks & trays made of Stainless Steel with adjustable tray heights.
- CFC free refrigeration systems.
- Chamber illumination by LED light with door switch.
- Unit mounted on castor wheels for easy movement.



Ethernet
Communication



Alarm



IQ/OQ/PQ
Documents



PC
Connectivity

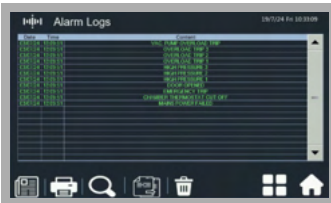


Eco
Friendly



CFC Free

Stability Chamber (EIE-106RGT)



PLC & HMI Features

- 7" touch screen HMI Display & PLC Controller System.
- Storage facility up to 21600 readings logged at 1 minute interval.
- Magnetic door lock for Password protected door access.
- Audit trail generation in HMI Display.
- Auto resume after power failure (**Main as well as UPS**).
- Three level operation, Admin, Supervisor & General with fixed access rights.
- Standby refrigeration and Standby humidity system.
- GSM MODULE (Mobile alert configuration) system.
- In-Built Data logger (Uniformity module).
- 4 Temp + 4 RH Sensor for data logging purpose.
- Compatible with EIE'S own StabSoft PC Software.
- Auto switch over facility and calender programing for mains and standby system.

Safety Provisions



Over temperature
cutoff system



Electrical overload
cutoff system



Time delay for
compressor switch on

Selection Guide

Working Chambers W X D X H (Meter)	Number of Trays	Capacity (Liters)	Product Code
45 X 45 X 45	2	92.00	EIE-106RGT92
50 X 50 X 70	2	175.00	EIE-106RGT175
60 X 60 X 60	3	216.00	EIE-106RGT216
60 X 60 X 90	3	324.00	EIE-106RGT324
60 X 60 X 125	4	450.00	EIE-106RGT450
70 X 70 X 125	4	612.00	EIE-106RGT612
80 X 80 X 125	4	800.00	EIE-106RGT800
90 X 90 X 125	4	1012.00	EIE-106RGT1012

R = Refrigerated G = GMP T = Touch Screen

Also available in powder coated model



Safety



PLC Control



Touch
Screen



Email Alert



Stand by
Cooling



Stand by
Humidity

Walk-in Cooling Chamber (EIE-117WGT)



Construction Details:

- Full fills storage conditions of 2°C to 8°C.
- Designed as per ICH guidelines to meet, WHO and USFDA requirement.
- Chamber equipped with PLC & Touch screen HMI system.
- Prefabricated modular structure with PUF/Rockwool insulated panels & reinforced floor panel.
- Interior Stainless Steel & Exterior PPGI/Stainless Steel.
- Toughened glass window to inspect samples.
- Racks & trays made of Stainless Steel with adjustable tray heights.
- CFC free refrigeration systems.
- Chamber illumination by LED light with door switch.



Ethernet
Communication



Alarm



IQ/OQ/PQ
Documents



PC
Connectivity



Eco
Friendly



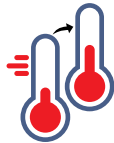
CFC Free

Walk-in Cooling Chamber (EIE-117WGT)



PLC & HMI Features

- 7" touch screen HMI Display & PLC Controller System.
- Storage facility up to 21600 readings logged at 1 minute interval.
- Magnetic door lock for Password protected door access.
- Audit trail generation in HMI Display.
- Auto resume after power failure (**Main as well as UPS**).
- Three level operation, Admin, Supervisor & General with fixed access rights.
- Standby refrigeration system.
- GSM MODULE (Mobile alert configuration) system.
- In-Built Data logger (Uniformity module).
- 4 Temp + 4 RH Sensor for data logging purpose.
- Compatible with EIE'S own StabSoft PC Software.
- Auto switch over facility and calender programing for mains and standby system.



2°C to 8°C

Safety Provisions



Over temperature
cutoff system



Electrical overload
cutoff system



Time delay for
compressor switch on

Selection Guide

Working Chambers W X D X H (Meter)	Number of Trays	Capacity (Liters)	Product Code
2.00 X 1.00 X 2.00	8	4000	EIE-117WGT40
2.00 X 1.50 X 2.00	12	6000	EIE-117WGT60
2.00 X 2.00 X 2.00	24	8000	EIE-117WGT80
2.00 X 2.50 X 2.50	28	12500	EIE-117WGT125
2.50 X 3.00 X 2.50	36	18750	EIE-117WGT187
3.10 X 3.00 X 2.50	40	23250	EIE-117WGT232
3.70 X 3.50 X 2.50	66	32500	EIE-117WGT325
3.90 X 3.90 X 3.00	84	45000	EIE-117WGT450
3.85 X 5.20 X 2.50	100	50000	EIE-117WGT500
6.40 X 5.00 X 2.50	200	80000	EIE-117WGT800

W = Walk-in G = GMP T = Touch Screen

Also available in powder coated model



Safety



PLC Control



Touch
Screen



Email Alert



Stand by
Cooling



21-CFR
PC Software

Cooling Chamber (EIE-117RGT)



Construction Details:

- Full fills storage conditions of 2°C to 8°C.
- Designed as per ICH guidelines to meet, WHO and USFDA requirement.
- Chamber equipped with PLC & Touch screen HMI system.
- Internal chamber fabricated from stainless steel S.S.-304/316 grade.
- Exterior body is fabricated from S.S.-304/316 grade material.
- Full view poly-carbonate observation door to inspect test samples.
- Racks & trays made of Stainless Steel with adjustable tray heights.
- CFC free refrigeration systems.
- Chamber illumination by LED light with door switch.
- Unit mounted on castor wheels for easy movement.



Ethernet
Communication



Alarm



IQ/OQ/PQ
Documents



PC
Connectivity



Eco
Friendly



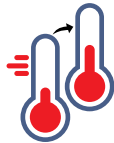
CFC Free

Cooling Chamber (EIE-117RGT)



PLC & HMI Features

- 7" touch screen HMI Display & PLC Controller System.
- Storage facility up to 21600 readings logged at 1 minute interval.
- Magnetic door lock for Password protected door access.
- Audit trail generation in HMI Display.
- Auto resume after power failure (**Main as well as UPS**).
- Three level operation, Admin, Supervisor & General with fixed access rights.
- Standby refrigeration system.
- GSM MODULE (Mobile alert configuration) system.
- In-Built Data logger (Uniformity module).
- 4 Temp + 4 RH Sensor for data logging purpose.
- Compatible with EIE'S own StabSoft PC Software.
- Auto switch over facility and calender programing for mains and standby system.



2°C to 8°C

Safety Provisions



Over temperature
cutoff system



Electrical overload
cutoff system



Time delay for
compressor switch on

Selection Guide

Working Chambers W X D X H (Meter)	Number of Trays	Capacity (Liters)	Product Code
45 X 45 X 45	2	92.00	EIE-117RGT92
50 X 50 X 70	2	175.00	EIE-117RGT175
60 X 60 X 60	3	216.00	EIE-117RGT216
60 X 60 X 90	3	324.00	EIE-117RGT324
60 X 60 X 125	4	450.00	EIE-117RGT450
70 X 70 X 125	4	612.00	EIE-117RGT612
80 X 80 X 125	4	800.00	EIE-117RGT800
90 X 90 X 125	4	1012.00	EIE-117RGT1012

R = Refrigerated G = GMP T = Touch Screen

Also available in powder coated model



Safety



PLC Control



Touch
Screen



Email Alert



Stand by
Cooling



21-CFR
PC Software

Walk-in BOD Incubator (EIE-202WGT)



Construction Details:

- Full fills storage conditions of 5°C to 60°C.
- Designed as per ICH guidelines to meet, WHO and USFDA requirement.
- Chamber equipped with PLC & Touch screen HMI system.
- Prefabricated modular structure with PUF/Rockwool insulated panels & reinforced floor panel.
- Interior Stainless Steel & Exterior PPGI/Stainless Steel.
- Toughened glass window to inspect samples.
- Racks & trays made of Stainless Steel with adjustable tray heights.
- CFC free refrigeration systems.
- Chamber illumination by LED light with door switch.



Ethernet
Communication



Alarm



IQ/OQ/PQ
Documents



PC
Connectivity



Eco
Friendly



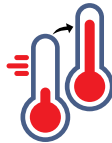
CFC Free

Walk-in BOD Incubator (EIE-202WGT)



PLC & HMI Features

- 7" touch screen HMI Display & PLC Controller System.
- Storage facility up to 21600 readings logged at 1 minute interval.
- Magnetic door lock for Password protected door access.
- Audit trail generation in HMI Display.
- Auto resume after power failure (**Main as well as UPS**).
- Three level operation, Admin, Supervisor & General with fixed access rights.
- Standby refrigeration system.
- GSM MODULE (Mobile alert configuration) system.
- In-Built Data logger (Uniformity module).
- 4 Temp + 4 RH Sensor for data logging purpose.
- Compatible with EIE'S own StabSoft PC Software.
- Auto switch over facility and calender programing for mains and standby system.



5°C to 60°C

Safety Provisions



Over temperature
cutoff system



Electrical overload
cutoff system



Time delay for
compressor switch on

Selection Guide

Working Chambers W X D X H (Meter)	Number of Trays	Capacity (Liters)	Product Code
2.00 X 1.00 X 2.00	8	4000	EIE-202WGT40
2.00 X 1.50 X 2.00	12	6000	EIE-202WGT60
2.00 X 2.00 X 2.00	24	8000	EIE-202WGT80
2.00 X 2.50 X 2.50	28	12500	EIE-202WGT125
2.50 X 3.00 X 2.50	36	18750	EIE-202WGT187
3.10 X 3.00 X 2.50	40	23250	EIE-202WGT232
3.70 X 3.50 X 2.50	66	32500	EIE-202WGT325
3.90 X 3.90 X 3.00	84	45000	EIE-202WGT450
3.85 X 5.20 X 2.50	100	50000	EIE-202WGT500
6.40 X 5.00 X 2.50	200	80000	EIE-202WGT800

W = Walk-in G = GMP T = Touch Screen

Also available in powder coated model



Safety



PLC Control



Touch
Screen



Email Alert



Stand by
Cooling



21-CFR
PC Software

BOD Incubator (EIE-202RGT)



Construction Details:

- Full fills storage conditions of 5°C to 60°C.
- Designed as per ICH guidelines to meet, WHO and USFDA requirement.
- Chamber equipped with PLC & Touch screen HMI system.
- Internal chamber fabricated from stainless steel S.S.-304/316 grade.
- Exterior body is fabricated from S.S.-304/316 grade material.
- Full view poly-carbonate observation door to inspect test samples.
- Racks & trays made of Stainless Steel with adjustable tray heights.
- CFC free refrigeration systems.
- Chamber illumination by LED light with door switch.
- Unit mounted on castor wheels for easy movement.



**Ethernet
Communication**



Alarm



**IQ/OQ/PQ
Documents**



**PC
Connectivity**



**Eco
Friendly**



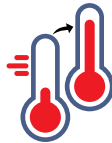
CFC Free

BOD Incubator (EIE-202RGT)



PLC & HMI Features

- 7" touch screen HMI Display & PLC Controller System.
- Storage facility up to 21600 readings logged at 1 minute interval.
- Magnetic door lock for Password protected door access.
- Audit trail generation in HMI Display.
- Auto resume after power failure (**Main as well as UPS**).
- Three level operation, Admin, Supervisor & General with fixed access rights.
- Standby refrigeration system.
- GSM MODULE (Mobile alert configuration) system.
- In-Built Data logger (Uniformity module).
- 4 Temp + 4 RH Sensor for data logging purpose.
- Compatible with EIE'S own StabSoft PC Software.
- Auto switch over facility and calender programing for mains and standby system.



5°C to 60°C

Safety Provisions



Over temperature
cutoff system



Electrical overload
cutoff system



Time delay for
compressor switch on

Selection Guide

Working Chambers W X D X H (Meter)	Number of Trays	Capacity (Liters)	Product Code
45 X 45 X 45	2	92.00	EIE-202RGT92
50 X 50 X 70	2	175.00	EIE-202RGT175
60 X 60 X 60	3	216.00	EIE-202RGT216
60 X 60 X 90	3	324.00	EIE-202RGT324
60 X 60 X 125	4	450.00	EIE-202RGT450
70 X 70 X 125	4	612.00	EIE-202RGT612
80 X 80 X 125	4	800.00	EIE-202RGT800
90 X 90 X 125	4	1012.00	EIE-117RGT1012

R = Refrigerated G = GMP T = Touch Screen

Also available in powder coated model



Safety



PLC Control



Touch
Screen



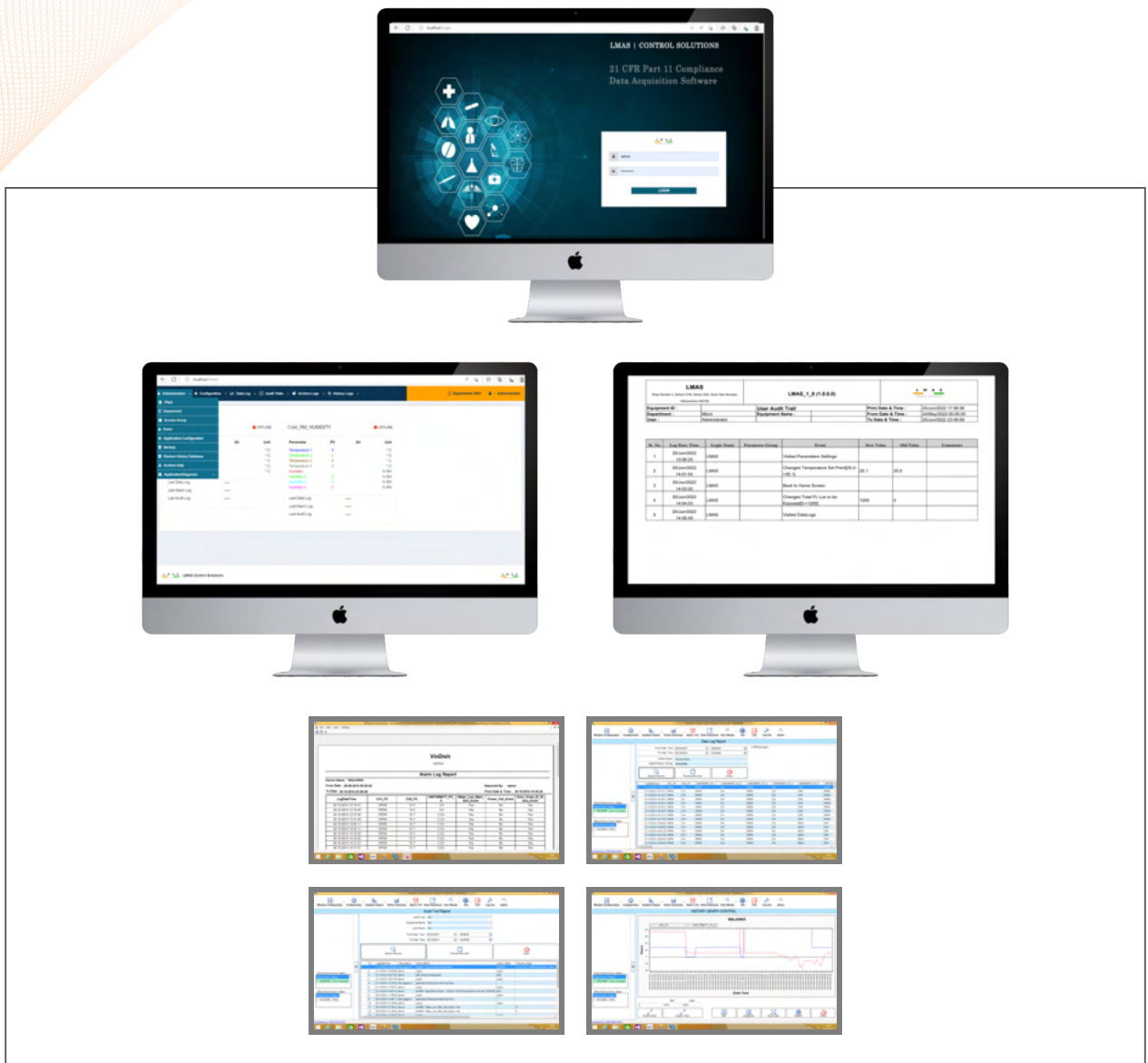
Email Alert



Stand by
Cooling



21-CFR
PC Software



Salient Features :

- Multi Chamber data - Acquisition Software.
- Generates graphical analysis of DATA as per - 21 CFR.
- Compliance guidelines.
- File encryption Facility.
- Secure login facility.
- Password protected. System access is controlled by the system supervisor.
- Limit system access.
- Limit module access.
- Password expiration.
- Bilateral user ID and password identification.
- Access failure lock out.
- System access logs.
- System audit trail report.
- System Input / Output logs.
- Mean kinetic temperature calculation.
- Maintains log of user activities like users logged in, login/logout time, and changes made by the user in software settings Audit Trail Reports.
- Ensure Gap-free Records.
- Schedule Reports via Email.
- Meet Tough Standards.
- View Environments in Real-Time.
- Flexible Alarm Management.
- Consistent Alarm Acknowledgements.
- Highly Secure & Temper proof.
- Protection From Data Loss.

Our Growth Contributor

Cipla

dishman

zydus
Dedicated To Life

AKUMS

AUROBINDO
Committed to healthier life!

amneal
PHARMACEUTICALS

torrent
PHARMA

SUN
PHARMA

LTROKAA
Imagine. Innovate

INTAS

German Remedies
Pharmaceuticals Pvt. Ltd.

MACLEODS

ipca
A dose of life

WEST-COAST
Pharmaceutical Works Ltd.

wipro
WIPRO ENTERPRISES PRIVATE LIMITED

MEPRO

AARTI INDUSTRIES LIMITED

LACTOSE
INDIA LIMITED

Nagarjun

aether
elementally innovative

epex

Dabur

Amoli
Organics Pvt. Ltd.

Relax
Pharmaceuticals

Century
Pharmaceuticals, Inc.

SHREE SAHJANAND HERBAL
SSH
BHACHAU

Gujarat Ambuja Exports Ltd
Bio-chem Div

BACFO
Pharmaceuticals

SURU

Aj
AJINOMOTO.

ISO 9001:2015 Certificate



CE Certificate



Ethernet



Alarm



IQ/OQ/PQ Documents



PC Connectivity



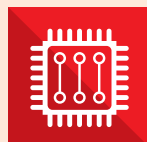
Eco Friendly



CFC Free



Safety



PLC Control



Touch Screen



Email Alert



Stand by Cooling



Stand by Heating



EIE INSTRUMENTS PVT. LTD.

(An ISO 9001:2015 Certified Company)

Corporate Office :

A-1301, BVR Ek, Opp. Hotel Inder Residency, Nr. Gujarat College, Ellisbridge, Ahmedabad-380 006, India.

Ph. : (079) 6621 1234 • Mob.: +91-92272 30010

Email : info@eieinstruments.com

Manufacturing Plant-1 & NABL LAB Address :

Survey No. 1098, Nr. Mahakali Temple, Opp. Primary School, Village Kubadthal, Tal : Daskroi, Ahmedabad-382 433, India.

Ph. : (079) 3520 8300

Website : www.eieinstruments.com